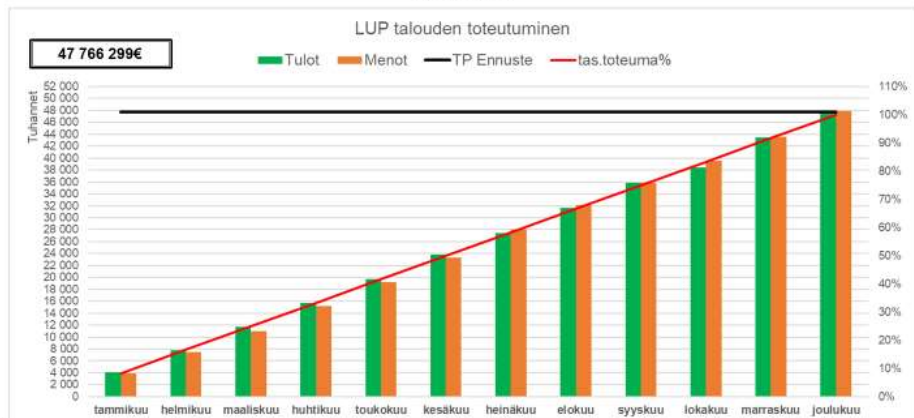
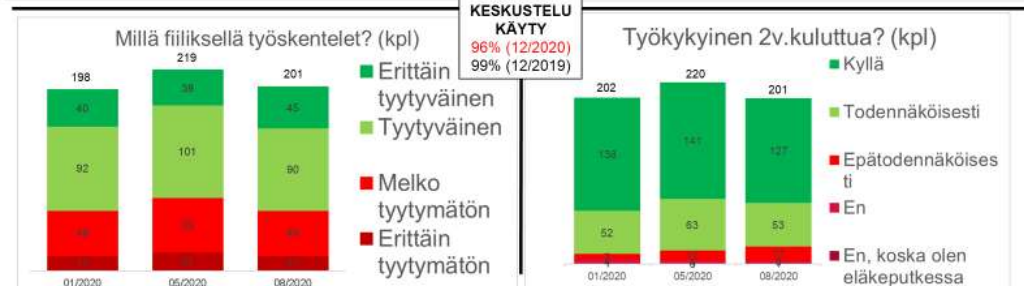
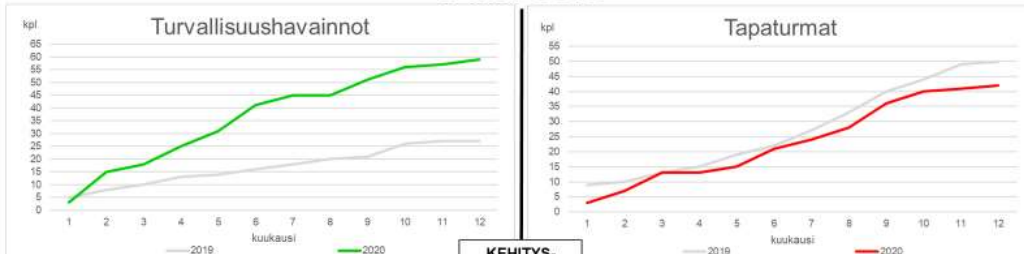


TALOUS

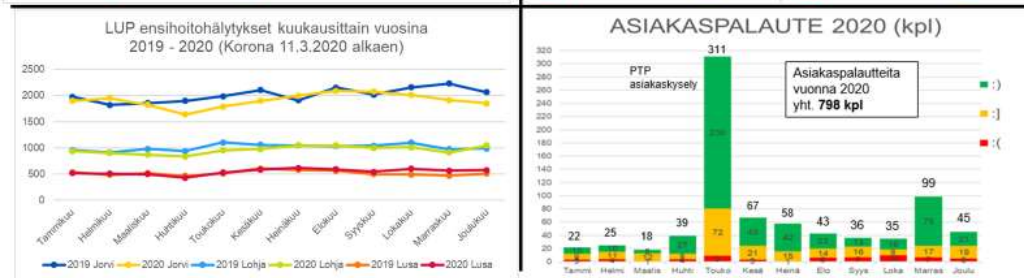
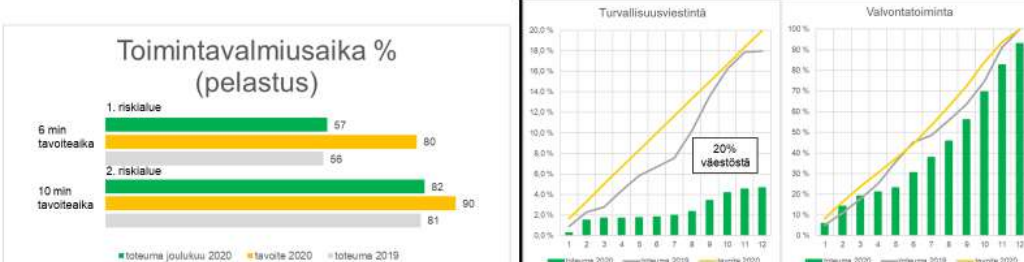


PELASTUS toteuma 428 737€	EH JORVI toteuma -435 745€	EH LUSA toteuma 262 905€	EH LOHJA toteuma 33 570€	INVESTOINNIT toteuma 39 361€
-------------------------------------	--------------------------------------	------------------------------------	------------------------------------	--

HENKILÖSTÖ



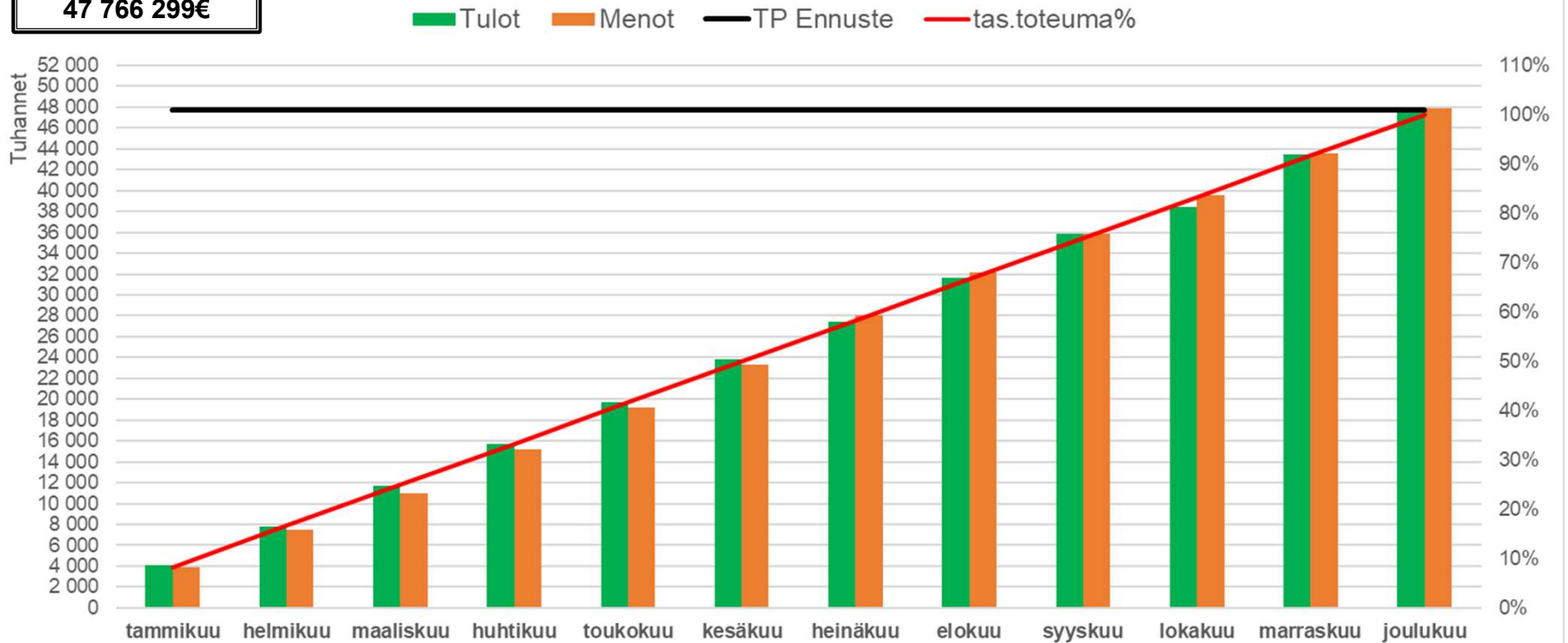
TOIMINTA



TALOUS

LUP talouden toteutuminen

47 766 299€



**PELASTUS
toteuma**

428 737€

**EH JORVI
toteuma**

-435 745€

**EH LUSA
toteuma**

262 905€

**EH LOHJA
toteuma**

33 570€

**INVESTOINNIT
toteuma**

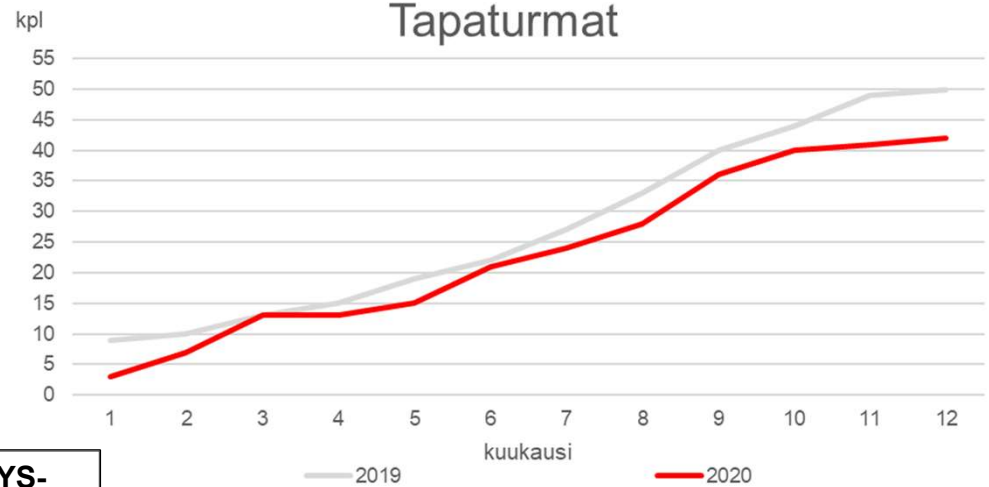
39 361€

HENKILÖSTÖ

Turvallisuushavainnot

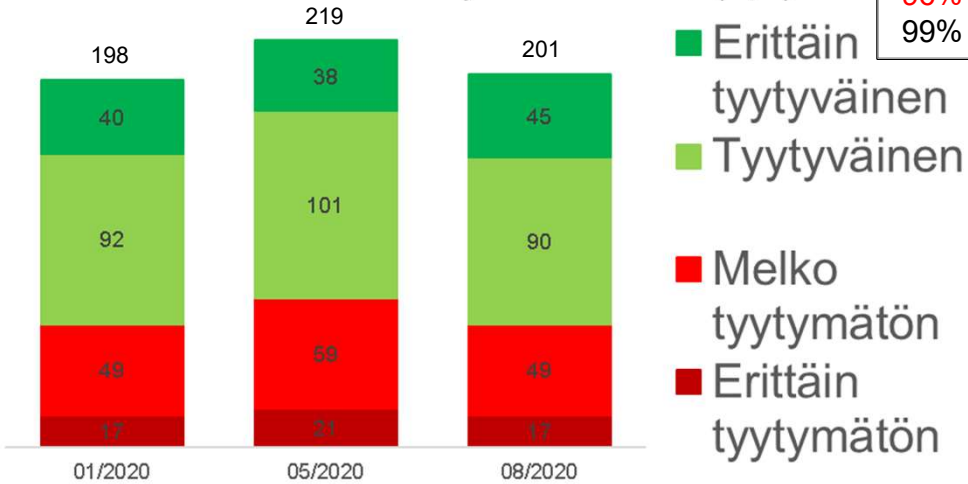


Tapaturmat

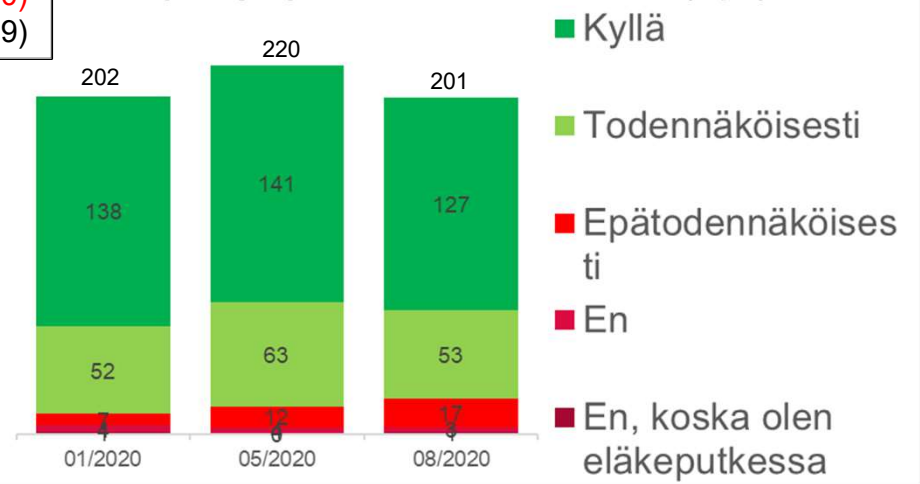


**KEHITYS-
KESKUSTELU
KÄYTY**
96% (12/2020)
99% (12/2019)

Millä fiiliksellä työskentelet? (kpl)

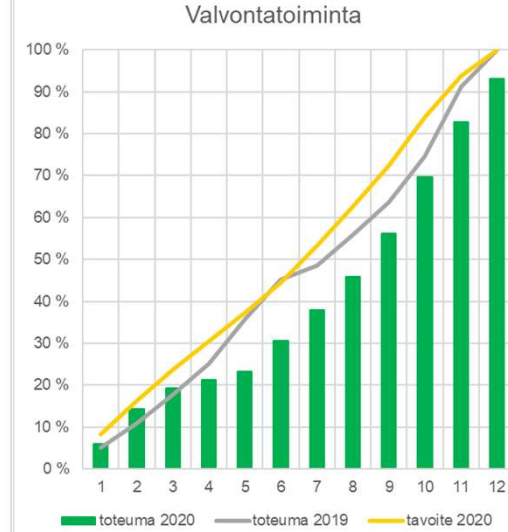
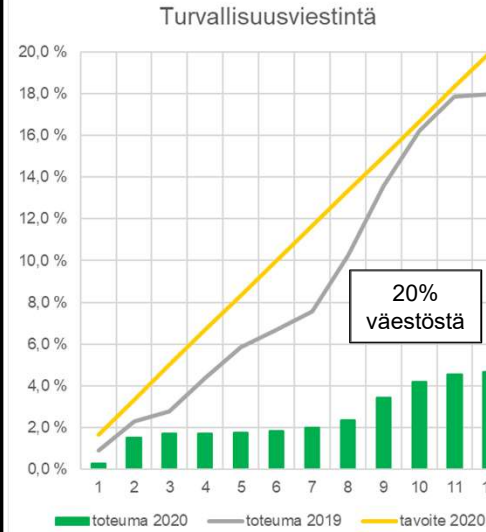
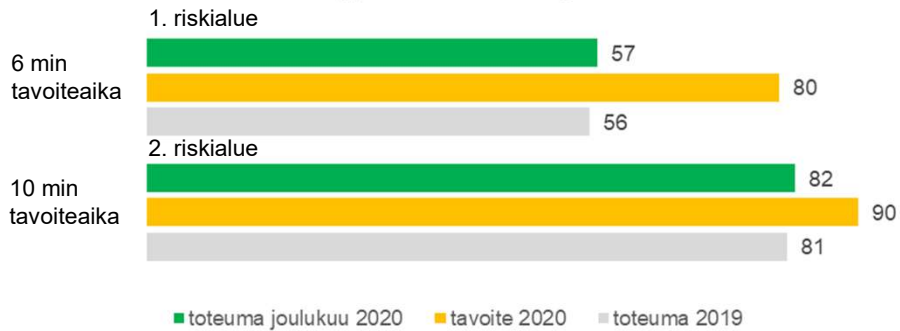


Työkykyinen 2v.kuluttua? (kpl)

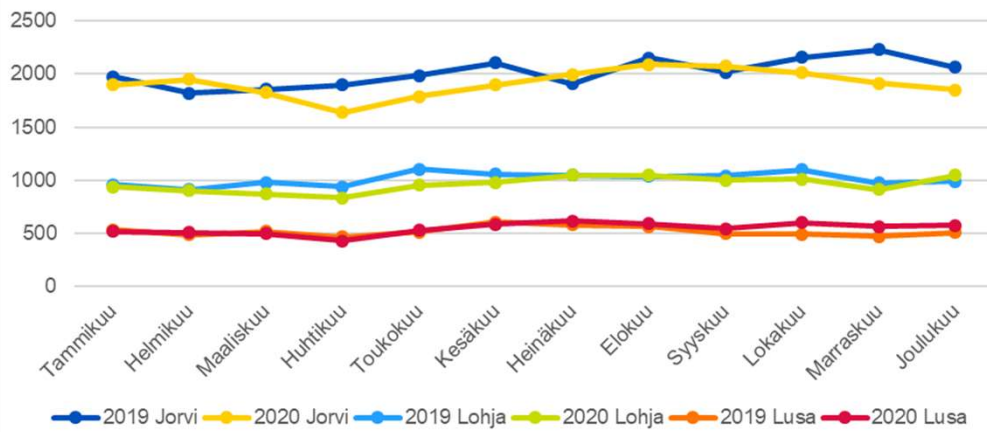


TOIMINTA

Toimintavalmiusaika % (pelastus)



LUP ensihoitohälytykset kuukausittain vuosina 2019 - 2020 (Korona 11.3.2020 alkaen)



ASIAKASPALAUTE 2020 (kpl)

